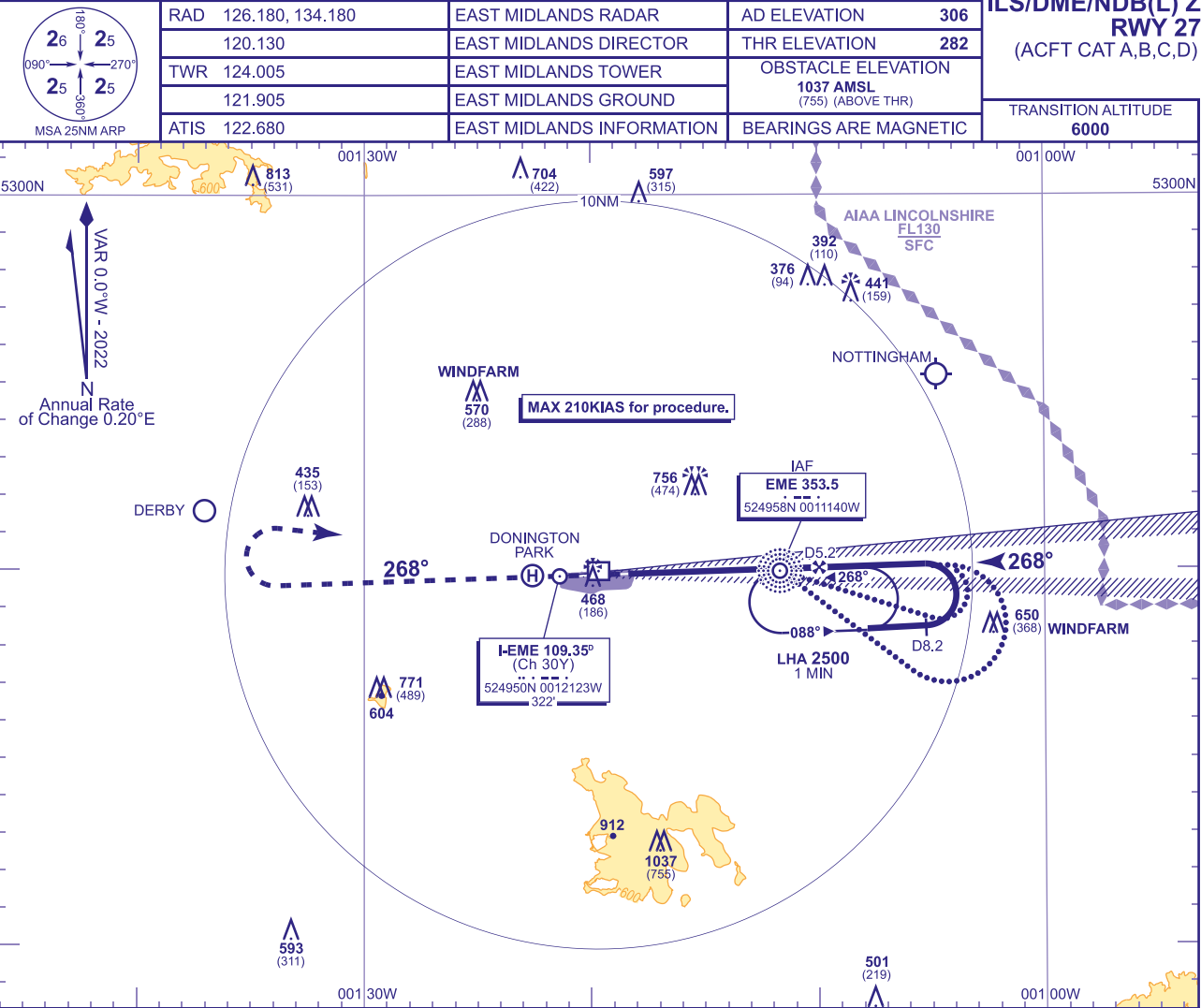
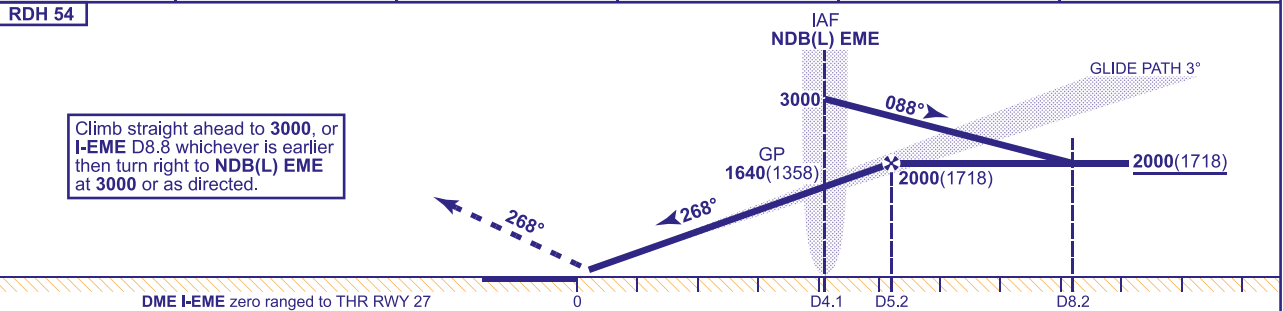


INSTRUMENT APPROACH CHART - ICAO

EAST MIDLANDS
ILS/DME/NDB(L) Z
RWY 27
(ACFT CAT A,B,C,D)



RECOMMENDED PROFILE GLIDE PATH 3°, 320FT/NM					
DME I-EME	5	4	3	2	1
ALT(HGT)	1930(1648)	1610(1328)	1290(1008)	970(688)	650(368)
RDH 54					



Aircraft Category		A	B	C	D	Rate of descent	G/S KT	160	140	120	100	80
OCA (OCH)	CAT I	437(155)	448(166)	460(178)	473(191)		FT/MIN	850	740	640	530	420
	CAT II	340(58)	351(69)	363(81)	382(100)							
VM(C)OCA (OCH AAL)	Total Area	770(464)	800(494)	1160(854)	1160(854)							

ALTERNATIVE PROCEDURE
From overhead NDB(L) EME **not below 3000**(2718) fly outbound on NDB(L) EME QDR 109° (CAT A,B); NDB(L) EME QDR 126° (CAT C,D), descending to **not below 2000**(1718). At I-EME DME 8.2 base turn left to intercept LOC. Once established on the LOC descend on the GP from the FAP (nominal I-EME D5.2) to DH.

NOTE 1 Lowest altitude to commence procedure from hold is **3000**.
2 Aircraft will normally be required to hold not lower than **3000**.

CHANGE (12/25): CHART TITLE REVISED.

AERO INFO DATE 22 SEP 25

AD 2-EGNX-8-7